



**BURNLEY**  
HIGH SCHOOL

**OUR  
ASPIRATIONAL  
FAMILY**



**Options Booklet 2022**



## Contents

Page 3	Headteacher's letter to students
Page 4	Headteacher's letter to parents
Page 5	Key Stage 4 Curriculum
Page 6	Making your choices
Page 7	What to do next
	Important dates
Page 8	Option Pathways 2022
Page 9	Core subject information
	Page 10 English Literature
	Page 11 English Language
	Page 12 Mathematics
	Page 13 Combines science
Page 14	Option subject information
	Page 15 History
	Page 16 Geography
	Page 17 Spanish
	Page 18 Religious Education
	Page 19 Enterprise and Marketing
	Page 20 Triple Science
	Page 21 Physical Education
	Page 22 Computer Science
	Page 23 Catering and Hospitality
	Page 24 Art
	Page 25 Performing arts: Production specialism
Page 26	Performing arts: Performance specialism



## A letter from the Headteacher to Year 9 students

Dear Year 9 student,

Choosing your options is one of the most important decisions of your educational career. Making sure you pick the Key Stage 4 courses that are right for you will make a big difference to the next two years and beyond. Getting it right will help you to finish Year 11 with a set of GCSE results that reflects your hard work and it could be as important as influencing your future career choices and whether you go on to future education – so it's a really important decision and you should treat it as such.

This booklet sets out the decision making process and provides you with some of the advice you will need in order to get it right.

Speaking to your parents/carers, your teachers, your form tutor and our Careers Lead, Mr Brandwood, as well as any member of the Senior Leadership Team will be important. These groups of people know you best and can give you advice based on this. Take the time to really think about your decision as once your choices have been made and agreed, you will not be able to change them.

You will be working on the KS4 courses you choose throughout Year 10 and 11, starting in September 2022. KS4 is demanding and you must be confident that you like the subjects you have chosen and that you feel confident that you can do well in them.

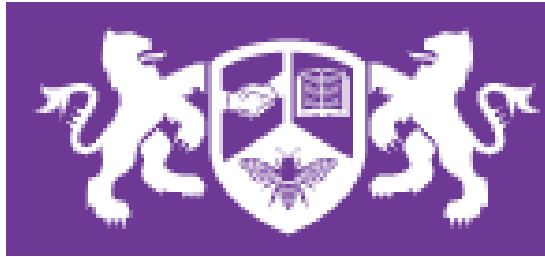
I am very proud of every subject area and teacher here at Burnley High School and have great confidence in our staff. I know whichever course you opt for, you will receive the highest quality teaching, support and opportunities. You will be supported at every stage by your form tutor, Head of Year and all staff. However, you also need to know that being successful at KS4 demands maturity and that maturity begins now by making sure you choose your options wisely.

I very much look forward to supporting you with this process and the next exciting chapter in your life at Burnley High School.

Kind Regards,

Mrs E Starkey

Headteacher



## A letter from the Headteacher to parents

Dear Parent/Carer,

Your child is at an important stage in their education when they will be make important decisions about the subjects they will study in Year 10 and 11. As you will be aware, throughout KS3, all students cover a compulsory range of subjects, but as they move into their KS4 studies, they are able to 'opt' for a number of subjects. The courses we offer allow students to develop and pursue their personal interests whilst retaining the breadth of knowledge for them to be successful after they leave Burnley High School. We offer a range of GCSE subjects as well as some BTEC qualifications. Burnley High School has been preparing your students through a rich Key Stage 3 curriculum and careers programme to ensure they are fully equipped and prepared to make informed choices on the next steps that will support their future aspirations. Students will continue to take part in our Personal Development programme, which meets statutory requirements for Relationships and Sex Education as well as Citizenship and PHSE.

This booklet outlines the Key Stage 4 curriculum information you will need to help your child/young person to make these informed choices. Please read this booklet carefully and see it as the beginning of the process. It is important that the decisions are made by your child, but with your input and agreement. It is very important that the course choices are selected very carefully and not based on options their friends are taking, or the teacher they currently have. During the options process, we will make every attempt to meet individual preferences, however, there are occasions when this is not possible due to popularity of courses.

I am confident that your child/young person is well taught at Burnley High School and is provided with the right advice and guidance to help them make these critical decisions. During KSD4, students will regularly be given advice on planning workload and revision techniques and we want to work with you for the benefit of your child/young person and value your support as they embark and move forward on this important journey.

Kind Regards,

Mrs E Starkey

Headteacher

## Key Stage 4 Curriculum

At Burnley High School we aim for all students to follow a broad and balanced curriculum to keep as many pathways open to them for their future chosen careers.

The timetable for subjects is as follows:

Subject	Hours over 2 weeks
English Language and Literature	11 hours
Mathematics	10 hours
Science (Combined)	10 hours
Physical Education	2 hours
Religious Education	2 hours
Option 1	5 hours
Option 2	5 hours
Option 3	5 hours

### **Core subjects:**

Core subjects include English, Mathematics, Science, Physical Education and Religious Studies which are compulsory for all students. Sets will be decided by Heads of Department for English, Mathematics and Science to ensure your child can access the best possible learning to allow them to achieve their potential. It is essential students achieve a grade 4 or above in English and Mathematics at GCSE, if they fail to do so they will be required to resit these subjects at college which can limit their options.

### **Options and final allocation:**

Students will choose three options from different pathways to study in depth at GCSE. It is important that students choose subjects they are passionate about as this will enable them to be successful and also to pursue their talents beyond GCSE. Every effort is made to try and allocate students with their first choice subjects in line with their preference but unfortunately this cannot be guaranteed. It is likely that some students may have to change their choices due to low take up of a subject or oversubscription.

### **What is the English Baccalaureate?**

The English Baccalaureate is not a qualification in itself. The measure recognises where students have secured a 'strong good' grade, currently grade 5 across a core of academic subjects – English, Mathematics, History or Geography, the Sciences and a Modern Foreign Language. The subjects included are designed to ensure all students have the opportunity to study a broad core of subjects, allowing further progression. For example, for students hoping to go to university, The Russell Group guide on making informed choices for post-16 education identifies 'facilitating subjects' at A Level. These are subjects most likely to be required or preferred for entry to degree courses and ones that will keep the most options open to students.

## Making your choice

Students will use WeDuc to make their choice. They will be asked to select their first option for block 1, their first and a back up option for blocks 2 and 3. The choice of subjects in each option block will be explained later in this booklet. If you do not have access to WeDuc then choices can be made over email to the Head of Year. You must consent to the choices your child has made.

Teachers at the school know you well enough to guide you to make the right choice. Please use parents evening as an opportunity to speak to teachers regarding the GCSE course and whether each subject is for you. This booklet should also help in the decision making process.

### **Whilst making your choices some key questions to consider are:**

- Which subjects are you most successful in?

Grades matter when applying for sixth form, college, university, apprenticeships and jobs throughout your life. Your teachers will be able to help you understand your progress so far in year 9 as well as your expected outcomes in year 11.

- Which subjects do you enjoy the most?

Two years is a long time and students excel in the subjects that they enjoy. Though you are not studying as many subjects overall you are studying more in-depth and all GCSE courses are demanding so ensure you choose the ones you are going to put the time and effort into.

- Which subjects link in with your future possible career?

Will this choice lead to the A levels, college courses and university courses that I am interested in? Speak to your form tutors as well as Mr Brandwood for advice. Also visit college websites to look at potential future courses, what subjects do they recommend you study?

- Which subjects do your teachers recommend?

Teachers know you best, use parents evening to ask them about the GCSE course as well as how successful they think you will be if you choose their specialism as an option.

### **What not to do:**

- Do not pick a subject just because your friends have chosen it.

You may not end up in the same class and this is the time to be selfish about what you want and need for your future.

- Do not pick a subject just because you like the staff member that teaches it.

There is no guarantee that you will get a certain teacher for some subjects.

### **Remember:**

- You might not get your first choice so also pay close attention to your back up option.
- It is really important to choose an option because you are good at it and you enjoy it.
- Lesson time is valuable and every lesson will focus on the knowledge students need.

## What to do next

Read through this booklet carefully to inform your decisions. Use parents evening as an opportunity to speak to your teachers and get their advice with your parents. Speak to your teachers in school also and ask them questions about the different courses to make an informed decision.

Think carefully and talk through your decisions before any final choices are made.

Remember you are choosing the right pathway for you but ensure you seek advice to ensure you have all the information before making a final decision.

Once the option choices are made and the courses start in September students will not be permitted to switch options so it is important the right choices are made.

## Important dates

Monday 28th March, 2022

- Parents evening: an opportunity to speak to teachers about the GCSE courses.

Friday 22nd April, 2022

- Deadline for option choices back

During May, 2022

- Conversations with students regarding any first choices that are not viable

11th July, 2022

- Options letter confirming choices sent home



## Option Pathways 2022

Please see the flowchart below. This provides more information about how the subject curriculum is organised for students when they begin their GCSE course.

Pathway A	Pathway B
English Language and Literature 2 GCSE's	
Mathematics GCSE 1 GCSE	
Combined Science 2 GCSE's	
Religious Education (Core)	
Physical Education (Core)	
<b>Option 1</b> History or Geography	
<b>Option 2</b> Spanish History/Geography Religious Education	<b>Option 2</b> Enterprise and Marketing Vocational qualification
<b>Option 3</b> Tripe Science (Invite only) Computer Science PE Catering Art Performing Arts	<b>Option 3</b> PE Catering Art Performing Arts

Students following pathway A will have the opportunity to follow the EBACC and study Spanish alongside their core subjects plus an optional subject in option 3.

Students following pathway B will be completing a vocational qualification in Enterprise and Marketing.

We will advise you which pathway your child will be following.



# Core subjects

# English Language GCSE



**Qualification:** GCSE English Language - AQA

## **Why is it important that I study this course?**

The English Language course allows students to develop their understanding of the way texts are constructed and the specific choices writers make. This helps them create their own pieces of writing and it helps students understand the choices they need to make for different texts. This is an important skill they need to develop in order to be successful in whatever career they choose to pursue.

## **What will I learn?**

The qualification will be split into two sections: reading and writing. Students will work on the following skills, focusing on both fiction and non-fiction extracts:

- Evaluate texts
- Compare viewpoints
- Analyse the effect of language
- Analyse the effect of structural devices
- Summarise key information
- Develop understanding of why writing is interesting and how phrasing can be used to do this
- How rhetoric is used in non-fiction writing and how the devices can be successful
- How vocabulary can be developed so it is ambitious and sophisticated

## **How will I be assessed?**

English Language Paper 1

Section A - Fiction reading and Section B – Fiction writing (narrative or description) – 50%

English Language Paper 2

Section A – Non-fiction reading and Section B – Non-Fiction writing (article, letter, essay or speech) - 50%

## **How will this course help me after my GCSEs?**

English Language is a core subject and is therefore needed in order to access college courses.

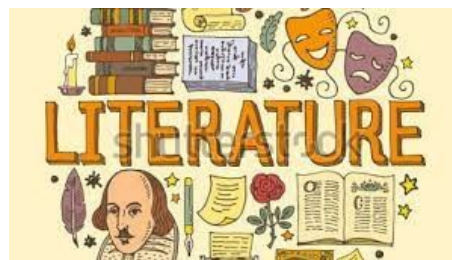
It is also relevant to a lot of A Level, BTEC and apprenticeship courses as it demonstrates the ability to write to high standard and to speak confidently and in a formal way.

English Language will allow you to study a wide range of courses, such as Law, History and Media Studies.

## **Where can I find out more?**

Please speak to a member of the English Department

# English Literature GCSE



## **Qualification:**

GCSE English Language – AQA

## **Why is it important that I study this course?**

English Literature allows students to appreciate how texts are written and how writers have been inspired by societal factors. Being able to analyse language, support comments with evidence and infer is a transferrable skill that will ensure students are successful in their courses at college and in their chosen career.

## **What will I learn?**

- Students will study three set texts: 'Macbeth', 'An Inspector Calls' and 'A Christmas Carol'
- Students will also study a poetry anthology, titled 'Power and Conflict'
- They will also study Unseen Poetry

Whilst studying these different components, students will learn how to:

- Support comments with evidence from the text
- Analyse the author's language choices
- Comment on societal factors that influenced the writer
- Compare poems

## **How will I be assessed?**

Literature Paper 1

Shakespeare and 19<sup>th</sup> Century Novel - 40%

Literature Paper 2

Modern Texts and Poetry - 60%

## **How will this course help me after my GCSEs?**

English Literature is a core subject and is therefore needed in order to access college courses.

English Literature will support you in being able to support your comments with evidence and being able to make inferences based on the text. It will allow you to study a range of different texts from different time periods to understand how language and attitudes have developed and changed.

English Literature will allow you to study a wide range of courses, such as Psychology, Sociology, Law and Media Studies.

## **Where can I find out more?**

Please speak to a member of the English Department

# Mathematics GCSE



## **Qualification:**

OCR GCSE Grades 9-1

## **Why is it important that I study this course?**

Mathematics is present in every career and in many aspects of everyday life from shopping, cooking, paying the bills, deciding on which mortgage to take out or even making sure your wage is correct. GCSE Mathematics embeds key knowledge to prepare you for life after school as well as developing your ability to problem solve which is an essential skill in any workplace. It develops prior learning as well as introduces new learning such as Trigonometry which is important for those in engineering. This course provides essential Mathematical knowledge for a range of careers from Footballer, Lawyer, Journalist to Hair and Beauty therapist.

## **What will I learn?**

You will study the 5 main areas of Maths in depth, these are algebra, geometry, data, ratio and proportion and number. From fractions to angles, pie charts to solving equations or Pythagoras to ratio; this course is varied and exciting as you become Mathematicians ready to take on any problem you may face in your life after Burnley High School.

## **How will I be assessed?**

The Mathematics GCSE consists of 3 exam papers:

- Paper 1: 1 hour 30 minutes, 100 marks, calculator
- Paper 2: 1 hour 30 minutes, 100 marks, non-calculator
- Paper 3: 1 hour 30 minutes, 100 marks, calculator

## **How will this course help me after my GCSEs?**

Many college courses and careers require at least a grade 5 in GCSE Mathematics as this shows that you have the Mathematical ability to problem solve, be systematic in your approach to work and have a solid grounding in key Mathematical areas, such as fractions, decimals, and percentages, which are ever present in the workplace. A GCSE in Mathematics opens many doors in future careers as well as providing you with the knowledge to support your everyday life from budgeting, reading bus timetables to decorating a house.

## **Where can I find out more?**

Speak to any of your Mathematics teachers.

# Combined Science GCSE



## **Qualification:**

GCSE Science – AQA Double award

## **Why is it important that I study this course?**

Science is key within STEM related subjects. Through learning how to conduct scientific research and experiments, we are able to gain a better understanding of the world around us. This allows humans to develop new technologies to improve treatment of diseases, improve energy sources and tackle global warming.

## **What will I learn?**

You will have the opportunity to learn the following key knowledge:

- The structure of the Heart and the causes of cardiovascular disease.
- Understand how metals are extracted from their ores.
- Learn the symptoms and transmission of several diseases.
- Understand how to calculate resistance in an electrical circuit.
- Design a practical to test the effect of limiting factors of Photosynthesis.
- Understand how to calculate relative formula mass and moles.

## **How will I be assessed?**

You will sit 6 exams consisting of:

Biology Paper 1 and 2

Chemistry Paper 1 and 2

Physics Paper 1 and 2

Each paper has 70 marks available.

## **How will this course help me after my GCSEs?**

Science will enable you to acquire core skills, such as critical thinking, problem solving and innovation, which you will be able to apply to the challenges of the ever-changing environment that we live in. It is an essential qualification for several careers such as medicine, engineering, and forensic scientist.

## **Where can I find out more?**

Please speak to Miss Israr

# Option Choices

# History GCSE

## **Qualification:**

Edexcel 9-1 GCSE

## **Why should I study this course?**

Because History gives us the tools to analyse and explain problems in the past, it positions us to see patterns that might otherwise be invisible in the present – thus providing a crucial perspective for understanding (and solving!) current and future problems.

Studying the diversity of human experience helps us appreciate cultures, ideas, and traditions that are not our own – and to recognise them as meaningful products of specific times and places. History helps us realise how different our lived experience is from that of our ancestors, yet how similar we are in our goals and values.

## **What will I learn?**

Weimar and Nazi Germany

Medicine in Britain

Early Elizabethan England

American West

## **How will I be assessed?**

3 Exams

Paper 1 – Thematic and Historic Environment 1 hour and 15 minutes

Paper 2 – Period Study and British Depth Study – 1 hour 45 minutes

Paper 3 – Modern Depth Study - 1 hour and 20 minutes

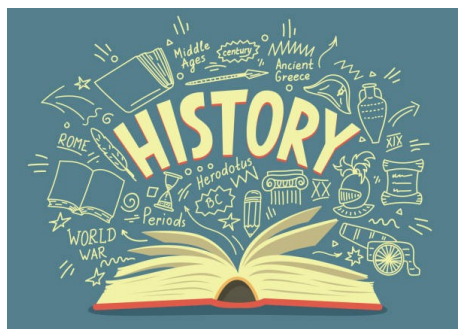
## **How will this course help me after my GCSEs?**

History will not only set you up for further study within History, but it will ensure you have the advantage of key skills and knowledge to further any study you encounter. History teaches inference, investigation skills and empathy. Within this, it will give you a greater appreciation for the wider world and the makeup of Britain.

## **Where can I find out more?**

Please speak to Mr Bradley-Green, Mr Brayfield or Mrs Walmsley.

You can also look on the Edexcel website too.



# Geography GCSE

## Qualification:

AQA Geography GCSE

## Why should I study this course?

Studying Geography gives you the opportunity to travel the world via the classroom, learning about both natural and social sciences along the way. You will understand how Geography impacts everyday life and discover the key opportunities and challenges facing the world. You will also develop academic and life skills from writing, teamwork and communication to analytical skills. You will carry out fieldwork to a river and urban area fieldwork. Fieldwork is an enjoyable opportunity to explore new environments, improving your understanding of topics as they come to life, it provides you with useful skills in collecting, understanding and later communicating data to different audiences.

## What will I learn? How will I be assessed?

### Course Overview

**Paper 1** - Written exam: 1 hour 30 minutes 35% of GCSE: Living with the physical environment

Section A—The Challenges of Natural Hazards—Tectonic hazards, earthquakes and volcanoes. Weather Hazards—Hurricanes and flooding and climate change.

Section B—The Living World - Ecosystems, tropical rainforests (The Amazon) and cold environments (Alaska).

Section C—Physical Landscapes in The UK Rivers —processes and formations. Glaciation—processes and formations.

**Paper 2** - Written exam: 1 hour 30 minutes 35% of GCSE: Challenges in the human environment

Urban Issues and Challenges - Urban growth creates opportunities and challenges for cities in LICs and NEEs—Lagos Nigeria. Urban sustainability requires management of resources and transport.

The Changing Economic World - The gap between rich and poor countries, multinational companies, employment structures in different countries, the economic situation of the UK.

The challenge of resource management - The global distribution of food, water and energy. Demand for food supply and different strategies to increase food supply.

**Paper 3** - Written exam: 1 hour 15 minutes 30% of GCSE: Geographical Applications

Issue evaluation - A resource booklet will be available twelve weeks before the date of the exam. Students will apply knowledge and understanding to interpret, analyse and evaluate the information and issues in the pre-release resources booklet. They will also use geographical skills to set the issues in context and to examine conflicting viewpoints about the issues. You will be asked questions on this booklet in your exam.

**Fieldwork**—Pupils must complete fieldwork. Pupils will carry out a physical fieldwork enquiry at The River Don and a human fieldwork enquiry in Burnley Town Centre. In paper 3 there will be questions based on the use of fieldwork materials from an unfamiliar context and questions based on students' individual enquiry

## How will this course help me after my GCSEs?

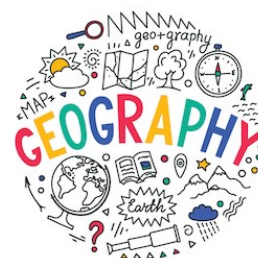
GCSE Geography allows you to become a well-rounded individual with knowledge and understanding of the human and physical world around you. You use a lot of geographical and maths skills so you are highly employable with a Geography GCSE.

It will give you entry into further and higher education.

Careers in geography are very vast, such as, tourism, climate change, town planning, conservation, population management, resource management, hazard assessment and disaster management, sustainability, cartographer, climatology, weather reporter and meteorologist.

## Where can I find out more?

Please speak to Mrs Byrom and Mrs Anderson





# Spanish GCSE



**Qualification:**

AQA Spanish GCSE

## Why should I study this course?

Knowing another language is almost like having a superpower! Not only can it help with the mastery of your first language, it aids communication and problem solving skills as well improving your memory. Knowing another language, in particular Spanish, means that you can communicate with 572 million people world wide!

## What will I learn?

You will cover three themes in total;

1. Identity and culture (family, friends, free time activities and customs in Spanish speaking countries)
2. Local, national and international places of interest (your home and town, travel and tourism and social issues)
3. Current and future studies and employment (school studies, life at school and your future ambitions)

### How will I be assessed?

You will have 4 exams in total, all worth 25% of your final grade.

1. Listening
2. Reading
3. Writing
4. Speaking (conducted with your class teacher)

### How will this course help me after my GCSEs?

Knowing another language also makes you more employable and as an added incentive, in many instances, language skills also lead to hiring bonuses and increased salaries.

## Where can I find out more?

Please speak to Miss Costello, Miss Boardwell or Mrs Cunningham for more information.

# Religious Education GCSE



## **Qualification:**

Edexcel Specification B: Christianity and Ethics. Islam, Peace and Conflict

## **Why should I study this course?**

Religious Education prepares students to take part in the development of tomorrow's rapidly changing world. Religious Education contributes greatly to understanding the diversity of religion and non-religious belief in our community and the world today. It helps to foster young peoples' own cultural, social, spiritual and moral development. The lessons learned in Religious Education prepare students for responsibilities, experiences and opportunities later in life and helps them to understand the views and opinions of people whose beliefs and values differ from their own. Lessons provide a space for reflection on ideas and opportunities to develop thoughts about questions of meaning and ethics. The issues of religion and belief discussed in lessons frequently top the news agenda and RE helps make sense of them.

## **What will I learn?**

Religion and Ethics: Christianity- Christian Beliefs, Marriage and the Family, Living the Christian Life and Matters of Life and Death.

Religion, Peace and Conflict: Islam- Muslim Beliefs, Crime and Punishment, Living the Muslim Life and Peace and Conflict.

## **How will I be assessed?**

100% examination

Religion and Ethics:

Christianity- 1hr45mins

Religion, Peace and Conflict:

Islam- 1hr45mins

## **How will this course help me after my GCSEs?**

There are a wide range of courses that you can go on to study with a

GCSE in RE A-Levels- Philosophy, Sociology, Psychology, Law, Politics.

Any other courses that are about dealing with the public, e.g. hospitality, Tourism.

## **Careers**

Teaching, Civil Service, National Security, Diplomatic Service, Defence Industry, Human Rights, Law, Politics, Emergency Services: Police, Fire, Ambulance, Human resources.

## **Where can I find out more?**

Please speak to Mrs Metcalfe

# Enterprise and Marketing



## **Qualification:**

Cambridge National in Enterprise and Marketing

## **Why should I study this course?**

The course in Enterprise and Marketing will enhance your readiness for the world of work by developing transferable skills such as: planning, research and analysis, working with others and effective communication.

## **What will I learn?**

The qualification in Enterprise and Marketing will encourage students to:

- Understand and apply the fundamental principles and concepts of Enterprise and Marketing including characteristics of successful entrepreneurs, market research, financial viability, the marketing mix and factors to consider when starting up and running an enterprise
- Develop learning and practical skills that can be applied to real-life contexts and work situations
- Think creatively, innovatively, analytically, logically and critically
- Develop independence and confidence in using skills that would be relevant to the business and enterprise sector.

## **How will I be assessed?**

Enterprise and marketing concepts:

Two part exam consisting of multiple choice questions and short/medium response questions.

Design a business proposal:

OCR set assignment/coursework

Market and pitch a business proposal:

OCR set assignment/coursework

## **How will this course help me after my GCSEs?**

This qualification may lead into a Cambridge Technical Award in Business, BTEC Level 3 or A Level Business in further education. Students may progress in to roles such as self-employed professions, marketing officers and business administrative assistant. Once you have completed your further education, you can progress into higher education with a business management focused degree.

## **Where can I find out more?**

Please speak to Mr Brandwood.

# Triple Science GCSE



## **Qualification:**

AQA Triple Science

GCSE Biology

GCSE Chemistry

GCSE Physics

## **Why should I study this course?**

Science impacts countless decisions we make each day from managing our health and well-being to developing technologies. Triple Science will give you the opportunity to develop your natural human curiosity to ask questions (What is the problem?), construct a hypothesis (How do I solve it?), test it with evidence and evaluate the result (Did the solution work?), and making future decisions based on that result. It is key to innovation, global competitiveness, and human advancement.

## **What will I learn?**

You will have the opportunity to learn the following key knowledge:

- How monoclonal antibodies are produced.
- Detection of plant diseases.
- What Nanoscience consists of.
- Calculating percentage yield of a product.
- Factors that affect thermal insulation.
- The life cycle of a star.

## **How will I be assessed?**

You will sit 6 exams consisting of:

Biology Paper 1 and 2

Chemistry Paper 1 and 2

Physics Paper 1 and 2

Each paper has 100 marks available.

Each exam takes 1 hour and 45 minutes.

## **How will this course help me after my GCSEs?**

Studying Triple Science will provide you with a strong foundation of key concepts in all three disciplines (Biology, Chemistry and Physics) especially if you are interested in studying A-level Science at college. It will enable you to develop essential skills for various careers such as Biochemist, Astronomer, and chemical engineer.

## **Where can I find out more?**

Please speak to Miss Israr

## Physical Education

Qualification:

Pearson BTEC Level 1/Level 2 First Certificate in Sport

### Why should I study this course?

Physical Education has become a very high profile subject over the last few years. Physical Education supports the curriculum's vision for young people to enable students to become confident, connected, actively involved, lifelong learners. Studying this course will help develop learners who have a passion in sport and want to follow a career pathway down the sport route.

## What will I learn?

Students will learn a variety of different units within the course which will widen their subject knowledge within the sporting world. These include Fitness for Sport and Exercise, Practical Sports Performance, Anatomy and Physiology for Sports Performance, The Mind and Sports Performance, The Sports Performer in Action, Training for Personal Fitness, Leading Sports Activities, Promotion and Sponsorship in Sport, Lifestyle and Well-being, Injury and the Sports Performer, Running a Sports Event, The Sport and Active Leisure Industry and Profiling Sports Performance.

### How will I be assessed?

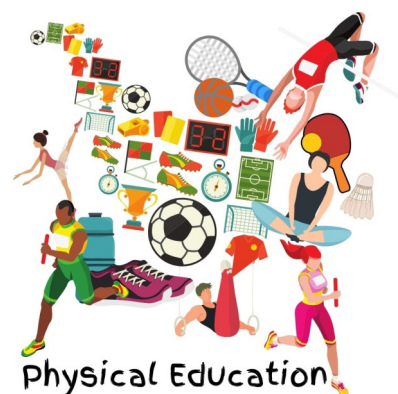
This qualification is taught over 240 guided learning hours (GLH). It has mandatory and optional specialist units. Learners must complete the three mandatory units, and a choice of optional specialist units to reach a total of 240 GLH. Learners will be assessed through written and practical assessments.

### How will this course help me after my GCSEs?

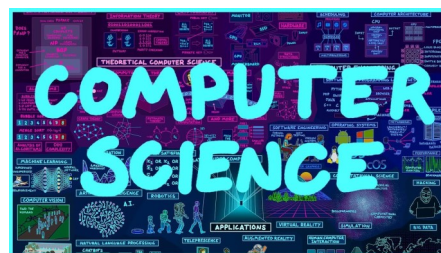
BTECs are vocationally-related qualifications, where learners develop knowledge and understanding by applying their learning and skills in a work-related context. They are popular and effective because they enable learners to take responsibility for their own learning and to develop skills that are essential for the modern-day workplace. These skills include: teamworking; working from a prescribed brief; working to deadlines; presenting information effectively; and accurately completing administrative tasks and processes. BTEC Firsts motivate learners and open doors to progression to further study and responsibility in the workplace.

## Where can I find out more?

Miss Brennan, Mr Nicolson and by visiting the BTEC First Website for more information on the Specification.



# Computer Science GCSE



## **Qualification:**

GCSE Computer Science OCR

## **Why should I study this course?**

Computer Science has become a very high profile subject over the last few years. The ability to program computers is a very valuable skill. Computing is of enormous importance to the economy, and the role of Computer Science as a discipline itself and as an 'underpinning' subject across Science and Engineering is growing rapidly.

## **What will I learn?**

Learn more about how computers work, including hardware and how instructions are coded

- Design and write more useful computer programs to solve problems (and for fun!)
- Further develop IT skills, to become a discerning user of computer systems
- Understand how data is represented on computers, including text, image, video and sound files
- Store and search data in databases
- Understand computer networks, including the internet
- The impact of computer science on society and the environment
- Ethics and the law relating to computer systems

## **How will I be assessed?**

- Computer systems (exam) 50%
- Computational thinking, algorithms and programming (exam) 50%

## **How will this course help me after my GCSEs?**

Computer Science is particularly relevant to STEM industries including Engineering, Science, Medicine and IT. It is also a great qualification to help if you are wanting to explore gaming as a career or become a computer programmer.

## **Where can I find out more?**

Please speak to Mr Brandwood.

# Catering and Hospitality



## **Qualification:**

Eduqas Hospitality and Catering Level 1/2

## **Why should I study this course?**

The hospitality industry is the 4th biggest employer in the UK, accounting for 3.2m jobs in 2016. With shows such as the Great British Bakeoff, Masterchef and The Great British Menu displaying the talent and creativity of British chefs, it has never been more a more popular time to work within this industry.

## **What will I learn?**

- A wide variety of sweet and savoury practical dishes, learning skills such as: filleting fish, portioning chicken, making pastry and cooking for specialists and cultural diets (e.g. vegans, lactose intolerance etc.)
- Time management, multi-tasking, preparing time plans, independence, presentation and health and safety
- How Hospitality and Catering provisions operate
- Health and safety requirements (legislation and the role of the employee and employer)
- How food can cause ill health (food poisoning, cross contamination, the Environmental Health Officer)

## **How will I be assessed?**

60% NEA (written PowerPoint and practical exam)

40% written exam

## **How will this course help me after my GCSEs?**

As well as teaching you a life skill, this course also teaches you transferrable skills valued by both colleges and employers. These include: team work, time management and meeting deadlines, communication and multi-tasking.

## **Where can I find out more?**

Speak to Miss Taylor

# Art GCSE



## **Qualification:**

Art Craft and Design GCSE- AQA

## **Why should I study this course?**

Art GCSE is based on the development of your skills and ideas through taught components and self-motivated study. The course will develop your skills but you must be committed, love the subject & feel motivated to work practically and express your own ideas. Are you keen to develop your visual skills? Are you creative, enthusiastic and imaginative? Are you able to sustain an investigation? Are you willing to experiment and take risks in your work? Are willing to review your progress and make improvements?

## **What will I learn?**

You will learn a range of enjoyable, creative and exciting approaches to making art such as painting, drawing, printmaking and photography. You will develop observational skills through sustained studies as well as shorter workshop exercises. You will learn to analyse artworks and to present high quality research on a range of artists and designers. You should be prepared to make trips to support your studies with first-hand experiences.

## **How will I be assessed?**

Component 1: Portfolio 60% No time limit. 96 marks.

A portfolio that in total shows explicit coverage of the four assessment objectives. It must include a sustained project evidencing the journey from initial engagement to the realisation of intentions and a selection of further work undertaken during the student's course of study

Component 2: Externally set assignment 40% Preparatory period followed by 10 hours of supervised time. 96 marks.

Students respond to their chosen starting point from an externally set assignment paper relating to their subject title, evidencing coverage of all four assessment objectives.

## **How will this course help me after my GCSEs?**

The creative industries are one of the fastest growing economic sectors in the UK and are responsible for over 5% of all jobs.

There are many career choices which art can support. For example: architect, graphic designer, artists, teacher, curator, lecturer, photographer, theatre designer, museum educator, costume designer, crafts-person and many more...!

## **Where can I find out more?**

Miss Parkinson, AQA Website. [AQA | Subjects | Art and Design](#).



# Performing Arts:

## Production Specialism



### **Qualification:**

Pearson BTEC Level 1/Level 2 First Award in Performing Arts

### **Why should I study this course?**

Performing Arts has grown as an industry over the recent years and is acknowledged for its impact on confidence, development in interpersonal skills and links to many areas of stage, screen and film. Within production elements, students will be able to explore and produce different ideas and create the production elements of a performance enhancing acting elements.

Performing Arts will give you the skills to work successfully as a team, use creativity, imagination and idea development skills whilst exploring a variety of different style, skills and elements.

### **What will I learn?**

Learn about the different performance and preparation elements of Performing Arts.

- Develop specialism specific techniques for production.
- Develop effective audition techniques and skills.
- Understand effective ways of preparing and planning for an assessment.
- Development of initial ideas, annotations and links to a design brief.
- Research skills.
- Understanding of materials and equipment.
- Understanding of creating and delivering specific skills sets to match a brief.

### **How will I be assessed?**

- Unit 1 – Practical audition and written letter of application (30%) – externally assessed
- Unit 2 – Preparation and completion of a live performance (30%) – internally assessed
- Specialism coursework and evidence recording of skills and techniques (40%) – internally assessed.

### **How will this course help me after my GCSEs?**

Being able to access the specialism units at Level and Degree level to further develop learning, knowledge and application of production.

Design technicians for productions, films, videos and gaming.

Theatrical make-up and corporate make-up settings.

### **Where can I find out more?**

See Miss Shaw (Set Design and Make-up)

See Mrs McEvilly (Lighting and sound)

# Performing Arts:

## Performance Specialism



### **Qualification:**

Pearson BTEC Level 1/Level 2 First Award in Performing Arts

### **Why should I study this course?**

Performing Arts has grown as an industry over the recent years and is acknowledged for its impact on confidence, development in interpersonal skills and links to many areas of stage, screen and film. Within performance elements, students are able to specialise within their chosen area and explore key skills for preparation and delivery of a successful performance.

### **What will I learn?**

Learn about the different performance and preparation elements of Performing Arts.

- Develop specialism specific techniques for performance.
- Develop effective audition techniques and skills.
- Understand effective ways of preparing and planning for an assessment.
- Rehearsal techniques.
- Supporting and maintaining healthy techniques and wellbeing for the body.

### **How will I be assessed?**

- Unit 1 – Practical audition and written letter of application (30%) – externally assessed
- Unit 2 – Preparation and completion of a live performance (30%) – internally assessed
- Specialism coursework and evidence recording of skills and techniques (40%) – internally assessed.

### **How will this course help me after my GCSEs?**

Being able to access the specialism units at Level and Degree level to further develop learning, knowledge and application of performances.

Performance skills such as confidence, communication, imagination and interpretation will help in the wider world and within all areas of life.

### **Where can I find out more?**

See Miss Shaw (Drama, Dance and Musical Theatre)

See Mrs McEvilly (Music and Musical Theatre)